

STATE OF UTAH



OFFICE OF THE LIEUTENANT GOVERNOR

CERTIFICATE OF BOUNDARY ADJUSTMENT

I, Deidre M. Henderson, Lieutenant Governor of the State of Utah, hereby certify that there has been filed in my office a notice of a common boundary adjustment known as the BOUNDARY ADJUSTMENT FOR WOLF CREEK WATER AND SEWER IMPROVEMENT DISTRICT, between POWDER MOUNTAIN WATER AND SEWER IMPROVEMENT DISTRICT and WOLF CREEK WATER AND SEWER IMPROVEMENT DISTRICT, dated FEBRUARY 8, 2024, complying with Section §17B-1-417, Utah Code Annotated, 1953, as amended.

Now, therefore, notice is hereby given to all whom it may concern that the attached is a true and correct copy of the notice of common boundary adjustment, referred to above, on file with the Office of the Lieutenant Governor pertaining to the BOUNDARY ADJUSTMENT FOR WOLF CREEK WATER AND SEWER IMPROVEMENT DISTRICT, located in WEBER COUNTY, State of Utah.

IN TESTIMONY WHEREOF, I have hereunto set my hand, and affixed the Great Seal of the State of Utah this 21st day of February, 2024 at Salt Lake City, Utah.



DEIDRE M. HENDERSON
Lieutenant Governor



**POWDER MOUNTAIN WATER AND
SEWER IMPROVEMENT DISTRICT**

February 8, 2024

Utah Lieutenant Governor's Office
350 North State Street, Suite 220
P.O. Box 142325
Salt Lake City, Utah 84114-2325

Sent via email to: annexations@utah.gov

Re: Notice of Impending Boundary Adjustment for Wolf Creek Water and Sewer Improvement District

On February 8, 2024, the Wolf Creek Water and Sewer Improvement District ("WCWSID") Board of Trustees and the Powder Mountain Water and Sewer Improvement ("PMWSID") Board of Trustees passed concurrent resolutions pursuant to Utah Code § 17B-1-417 (3). Approving the adjustment of the common boundary between the two districts to include property known as the Snowflake Subdivision ("affected Area" as defined by Utah Code § 17B-1-417 (1) within WCWSID's boundaries. The Two district's resolutions are attached as Exhibit (1) and the legal description of the Affected Area is attached as Exhibit (2). The affected area is also depicted on the final local entity plat, attached as Exhibit (3).

Pursuant to Utah Code §§ 17B-1-417(6) and 67-1a-6.5, WCWSID is seeking a Certificate of Boundary Adjustment from the LT. Governor's Office with respect to the Affected Area.

VERIFICATION

I, Robert Behrendt, PMWSID Board Chair, certify and declare that to the best of my knowledge all statutory requirements applicable to the above -referenced boundary action have been met.

February 8, 2024

Powder Mountain Water & Sewer Improvement District

**Robert Behrendt
PMWSID Board Chairman**

RESOLUTION TO ADJUST COMMON BOUNDARY

RESOLUTION #2024-08

WHEREAS, the Powder Mountain Water and Sewer Improvement District met on February 13, 2024, to consider, among other things, adoption of Resolution 2024-08 to adjust its common boundary by moving an area from the District to another, neighboring district which provides the same services; and

WHEREAS, Utah Code § 17B-1-417 governs the annexation of areas through boundary adjustment between two special districts that share a common boundary;

WHEREAS, the area in question is currently within the boundaries of the District and contains all residences in a subdivision known as Snowflake (the "Affected Area");

WHEREAS, the District shares a boundary with Wolf Creek Water and Sewer Improvement District ("Wolf Creek"), which provides the same services as the District; and

WHEREAS, the District and Wolf Creek intend to remove the Affected Area from the District's boundaries and into the boundaries of Wolf Creek by boundary adjustment;

NOW, THEREFORE, BE IT RESOLVED by the Board of Trustees of the Powder Mountain Water and Sewer Improvement District as follows:

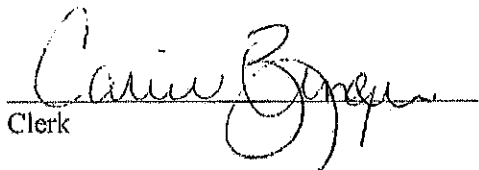
1. The District hereby adopts Resolution 2024-08 Adjust Common Boundary.
2. All resolutions, policies, procedures, rules and regulations of the district, or parts therefore, in conflict with this Resolution, to the extent of such conflict, hereby repealed.

Passed by the Board of Trustees of the Powder Mountain Water and Sewer Improvement District this 13th day of February 2024.



Chairman

ATTEST:


Clerk



February 8, 2024

Utah Lieutenant Governor's Office
350 North State Street, Suite 220
P.O. Box 142325
Salt Lake City, Utah 84114-2325

Sent via email to: annexations@utah.gov

Re: Notice of Impending Boundary Adjustment for Wolf Creek Water and Sewer Improvement District

To whom it may concern:

On February 8, 2024, the Wolf Creek Water and Sewer Improvement District ("WCWSID") Board of Trustees and the Powder Mountain Water and Sewer Improvement District ("PMWSID") Board of Trustees passed concurrent resolutions pursuant to Utah Code §17B-1-417(3), approving the adjustment of the common boundary between the two districts to include property known as the Snowflake Subdivision ("Affected Area" as defined by the Utah Code §17B-1-417(1)) within WCWSID's boundaries. The two districts' resolutions are attached as Exhibit 1 and the legal description of the Affected Area is attached as Exhibit 2. The Affected Area is also depicted on the final local entity plat, attached as Exhibit 3.

Pursuant to Utah Code §§17B-1-417(6) and 67-1a-6.5, WCWSID is seeking a Certificate of Boundary Adjustment from the Lt. Governor's office with respect to the Affected Area.

Verification

I, Miranda Menzies, WCWSID Board Chair, Certify and declare that to the best of my knowledge all statutory requirements applicable to the above-referenced boundary action have been met.

February 8, 2024

Wolf Creek Water and Sewer Improvement District

A handwritten signature in blue ink that reads "EMenzies". The signature is written over a horizontal line.

Miranda Menzies
WCWSID Board Chair

EXHIBIT 1

RESOLUTION 24-2

WOLF CREEK WATER AND SEWER IMPROVEMENT DISTRICT

Restatement of Approving Boundary Adjustment to Include Snowflake Subdivision

WHEREAS, Wolf Creek Water and Sewer Improvement District (“WCWSID”) provides public sewer services and wastewater treatment within the Wolf Creek area;

WHEREAS, Powder Mountain Water and Sewer Improvement District (“PMWSID”) provides public sewer services and wastewater treatment within the Powder Mountain area;

WHEREAS, WCWSID and PMWSID have a common boundary and provide the same service on the same retail basis;

WHEREAS, certain properties within the boundaries of PMWSID are currently being served by PMWSID, which properties are described in Exhibit A attached hereto and incorporated herein by reference (“Snowflake Subdivision”);

WHEREAS, Snowflake Subdivision is adjacent to portions of the common boundary between WCWSID and PMWSID as illustrated in Exhibit A;

WHEREAS, WCWSID and PMWSID have determined it is mutually advantageous to adjust the WCWSID boundary to include the Snowflake Subdivision;

WHEREAS, pursuant to Utah Code §17B-1-417, both PMWSID and WCWSID Boards of Trustees passed resolutions of intent to adjust the common boundaries and include the Snowflake Subdivision within WCWSID boundaries;

WHEREAS, PMWSID and WCWSID held a properly noticed joint public hearing on December 19, 2023, on the proposed Snowflake Subdivision boundary adjustment;

WHEREAS, no written protests were filed at or before the public hearing on the proposed Snowflake Subdivision boundary adjustment;

WHEREAS, the PMWSID Board of Trustees has indicated its intent to pass a resolution approving the boundary adjustment and remove the Snowflake Subdivision from its boundaries; and

WHEREAS, WCWSID intends to approve the boundary adjustment and include the Snowflake Subdivision within its boundaries.

NOW THEREFORE be it resolved by the WCWSID Board of Trustees as follows:

1. Pursuant to Utah Code §17B-1-417, the common boundary between PMWSID and WCWSID is adjusted to include the Snowflake Subdivision within WCWSID’s boundaries.

2. This resolution approving the Snowflake Subdivision boundary adjustment takes effect after both PMWSID's and WCWSID's Boards of Trustees adopt boundary adjustment resolutions.
3. The WCWSID Board of Trustees shall, within 30 days after both boundary adjustment resolutions take effect, file with the Lieutenant Governor: (1) a copy of a notice of an impending boundary action that complies with Utah Code §§17B-1-417(6)(a) and 67-1a-6.5(3) and (2) a copy of an approved final local entity plat that complies with Utah Code §§17-23-20 and §67-1a-6.5(1)(b).
4. Within 10 days after receiving a notice of an impending boundary action and approved final local entity plat, the lieutenant governor shall issue a Certificate of Boundary Adjustment if the lieutenant governor determines that the notice of an impending boundary action and approved final local entity plat meets the statutory requirements.
5. The lieutenant governor will send a Certificate of Boundary Adjustment to the WCWSID Board, return the original of the approved final local entity plat to the Board, and send a copy of the Certificate of Boundary Adjustment and approved final local entity plat to the State Tax Commission, the Utah Geospatial Resource Center, and the Weber County Assessor, Weber County Surveyor, Weber County Auditor, and Weber County Attorney.
6. Upon issue of the Certificate of Boundary Adjustment, Snowflake Subdivision is annexed into WCWSID's boundaries and is withdrawn from PMWSID's boundaries.
7. Pursuant to Utah Code §17B-1-417(6)(b), WCWSID shall submit originals of the notice of an impending boundary action, Certificate of Boundary Adjustment, approved final local entity plat, and a certified copy of WCWSID's Resolution 23-09 and PMWSID's Resolution #2023-09 to the Weber County Recorder.
8. Until the aforementioned documents are recorded, WCWSID may not levy or collect a property tax on property within the Snowflake Subdivision, levy or collect an assessment on property within the Snowflake Subdivision, or charge or collect a fee for service provided to property within the Snowflake Subdivision.

This Resolution has been adopted at a regularly scheduled and properly noticed meeting of the WCWSID Board of Trustees on February 8, 2023.

MIRANDA MENZIES Aye

JON BINGHAM Aye

DON STEFANIK Aye

HENRY HUCHEL Aye

PAMELA YOUNG Aye

EMenzies 2/8/24

EXHIBIT 2

Boundary Adjustment Description

A PART OF THE SOUTH HALF OF SECTION 15, TOWNSHIP 7 NORTH, RANGE 1 EAST, SALT LAKE BASE, AND MERIDIAN U.S. SURVEY AND BEING MORE PARTICULARLY DESCRIBED AS FOLLOWS:

BEGINNING AT A POINT COMMON TO THE SOUTH SECTION LINE OF SAID SECTION 15 AND THE EXISTING WOLF CREEK WATER AND SEWER IMPROVEMENT DISTRICT BOUNDARY, WHICH IS NORTH 89°13'35" WEST 156.87 FEET FROM THE SOUTH QUARTER CORNER OF SAID SECTION, (BASIS OF BEARING IS NORTH 89°13'35" WEST 2666.73 FEET BETWEEN THE MONUMENTS FOUND MARKING THE SOUTH QUARTER CORNER AND THE SOUTHWEST CORNER OF SAID SECTION 15);

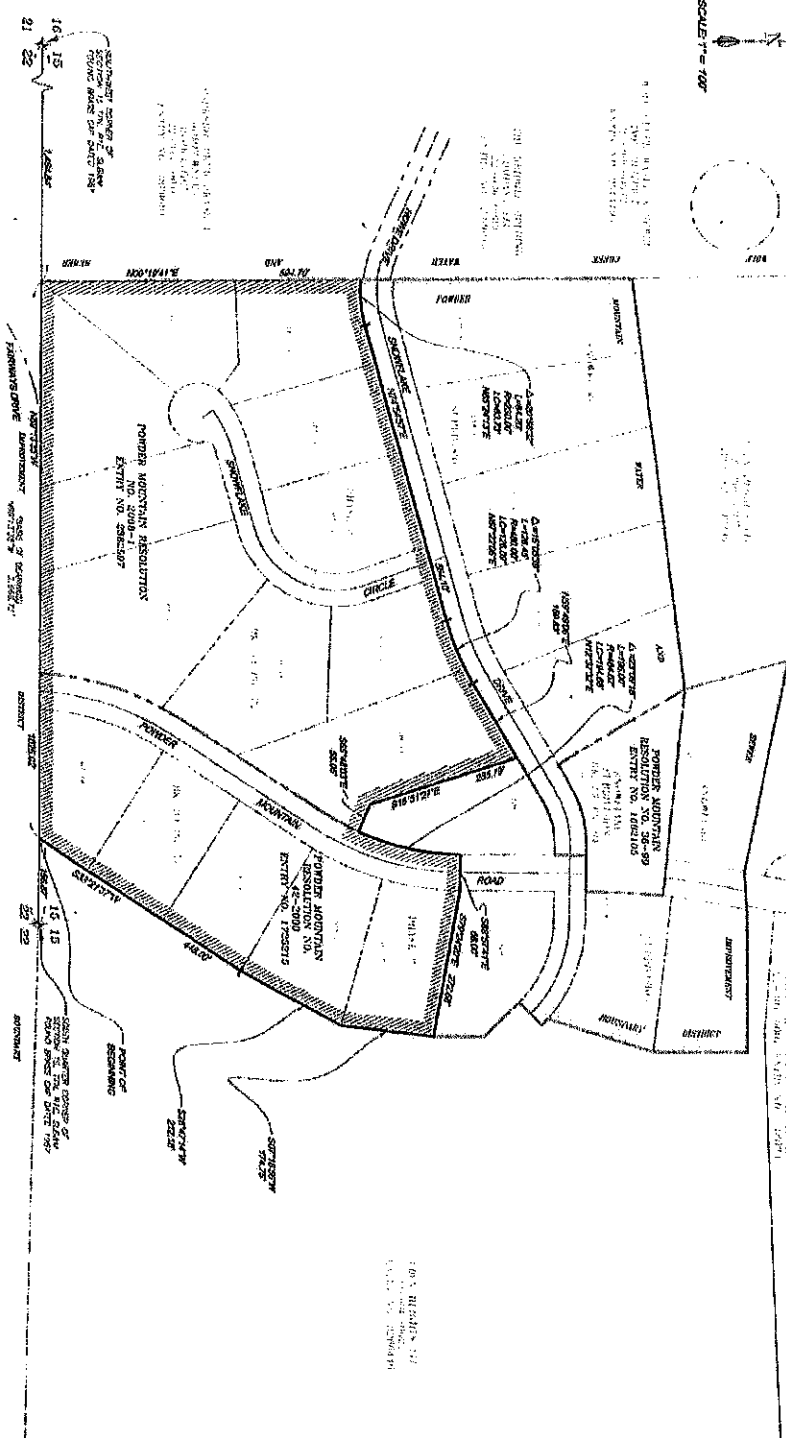
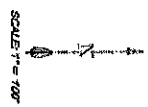
RUNNING THENCE THE FOLLOWING TWO (2) COURSES AND DISTANCES ALONG SAID EXISTING DISTRICT BOUNDARY LINE, WHICH IS ALSO ON THE SOUTH LINE OF SNOWFLAKE SUBDIVISION PHASE 2 AS RECORDED IN BOOK 39 AT PAGE 79 AND SNOWFLAKE SUBDIVISION PHASE 3 AS RECORDED IN BOOK 54 AT PAGE 72 IN THE WEBER COUNTY RECORDER'S OFFICE, SAID LINE IS ALSO ON THAT LINE OF POWDER MOUNTAIN RESOLUTION 42-2000 AS RECORDED IN ENTRY NO. 1725215, AND POWDER MOUNTAIN RESOLUTION 2008-1 AS RECORDED IN ENTRY NO. 2382597 AT THE WEBER COUNTY RECORDER'S OFFICE; (1) NORTH 89°13'35" WEST 1025.02 FEET ALONG SAID SOUTH LINE OF SAID SNOWFLAKE SUBDIVISION PHASE 2 AND 3; (2) NORTH 00°19'41" EAST 594.70 FEET ALONG THE WEST LINE OF SAID SNOWFLAKE SUBDIVISION PHASE 3 TO A POINT OF NON-CURVATURE COMMON TO SAID DISTRICT BOUNDARY AND SOUTH RIGHT-OF-WAY LINE OF SNOWFLAKE DRIVE WITH A 230.00 FOOT RADIUS CURVE TO THE LEFT; THENCE THE FOLLOWING TWELVE (12) COURSES AND DISTANCES ALONG THE PROPOSED WOLF CREEK DISTRICT BOUNDARY LINE, WHICH IS ALSO WITHIN SAID SNOWFLAKE SUBDIVISION PHASE 3 AND PHASE 2; (1) 84.20 FEET ALONG THE ARC OF SAID CURVE THROUGH A CENTRAL ANGLE OF 20°58'32" (CHORD BEARS NORTH 85°24'13" EAST 83.73 FEET); (2) NORTH 74°54'57" EAST 564.10 FEET TO A POINT OF CURVATURE WITH A 480.00 FOOT RADIUS CURVE TO THE LEFT; (3) 126.45 FEET ALONG THE ARC OF SAID CURVE THROUGH A CENTRAL ANGLE OF 15°05'39" (CHORD BEARS NORTH 67°22'06" EAST 126.09 FEET); (4) NORTH 59°49'06" EAST 159.83 FEET; (5) SOUTH 16°51'27" EAST 285.79 FEET; (6) SOUTH 65°48'03" EAST 55.05 FEET TO A POINT OF NON-CURVATURE WITH A 484.62 FOOT RADIUS CURVE TO THE LEFT; (7) 196.00 FEET ALONG THE ARC OF SAID CURVE THROUGH A CENTRAL ANGLE OF 23°09'18" (CHORD BEARS NORTH 12°37'32" EAST 194.68 FEET); (8) SOUTH 88°57'41" EAST 66.00 FEET ACROSS POWDER MOUNTAIN ROAD TO THE NORTHWEST CORNER OF LOT 6 OF SAID SNOWFLAKE SUBDIVISION PHASE 2; (9) SOUTH 79°24'20" EAST 272.68 FEET ALONG THE NORTH LINE OF SAID LOT 6; (10) SOUTH 07°18'56" WEST 174.75 FEET; (11) SOUTH 28°47'14" WEST 212.18 FEET; (12) SOUTH 33°21'37" WEST 448.00 FEET TO THE POINT OF BEGINNING.

CONTAINS 20.58 ACRES MORE OR LESS.

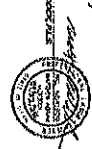
EXHIBIT 3

DISTRICT BOUNDARY ADJUSTMENT

DISCONNECTION FROM THE CORPORATE LIMITS OF POWDER MOUNTAIN WATER AND SEWER IMPROVEMENT DISTRICT BOUNDARY. RESOLUTION NO. 2024-08
 BOUNDARY ADJUSTMENT TO THE CORPORATE LIMITS OF WOLF CREEK WATER AND SEWER IMPROVEMENT DISTRICT. RESOLUTION NO. 24-2
 A PART OF THE SOUTH HALF OF SECTION 15, TOWNSHIP 7 NORTH, RANGE 1 EAST, SALT LAKE BASE AND MERIDIAN U.S. SURVEY;
 WEBER COUNTY, UTAH - JANUARY 2024



SEWER DISTRICTS
 The purpose of this boundary adjustment is to discontinue the corporate limits of the Powder Mountain Water and Sewer Improvement District and the Wolf Creek Water and Sewer Improvement District. The boundary adjustment is necessary to ensure that the corporate limits of the districts are consistent with the current boundaries of the districts. The boundary adjustment is necessary to ensure that the corporate limits of the districts are consistent with the current boundaries of the districts.



- LEGEND**
- ADJACENT CORPORATE LIMITS
 - RESOLUTION BOUNDARY LINES
 - SEWER DISTRICT BOUNDARY LINES
 - WEBER COUNTY SECTION CORNER

WASATCH CIVIL
 CONSULTING ENGINEERS
 1000 WEST 1000 SOUTH
 SALT LAKE CITY, UTAH 84119
 PHONE: 313.444.4444
 FAX: 313.444.4444
 WWW.WASATCHCIVIL.COM

GENERAL NOTES
 1. THE BOUNDARY ADJUSTMENT IS BASED ON THE CURRENT BOUNDARIES OF THE DISTRICTS AND THE CURRENT BOUNDARIES OF THE DISTRICTS. THE BOUNDARY ADJUSTMENT IS NECESSARY TO ENSURE THAT THE CORPORATE LIMITS OF THE DISTRICTS ARE CONSISTENT WITH THE CURRENT BOUNDARIES OF THE DISTRICTS.

GENERAL NOTES
 2. THE BOUNDARY ADJUSTMENT IS NECESSARY TO ENSURE THAT THE CORPORATE LIMITS OF THE DISTRICTS ARE CONSISTENT WITH THE CURRENT BOUNDARIES OF THE DISTRICTS. THE BOUNDARY ADJUSTMENT IS NECESSARY TO ENSURE THAT THE CORPORATE LIMITS OF THE DISTRICTS ARE CONSISTENT WITH THE CURRENT BOUNDARIES OF THE DISTRICTS.

GENERAL NOTES
 3. THE BOUNDARY ADJUSTMENT IS NECESSARY TO ENSURE THAT THE CORPORATE LIMITS OF THE DISTRICTS ARE CONSISTENT WITH THE CURRENT BOUNDARIES OF THE DISTRICTS. THE BOUNDARY ADJUSTMENT IS NECESSARY TO ENSURE THAT THE CORPORATE LIMITS OF THE DISTRICTS ARE CONSISTENT WITH THE CURRENT BOUNDARIES OF THE DISTRICTS.

GENERAL NOTES
 4. THE BOUNDARY ADJUSTMENT IS NECESSARY TO ENSURE THAT THE CORPORATE LIMITS OF THE DISTRICTS ARE CONSISTENT WITH THE CURRENT BOUNDARIES OF THE DISTRICTS. THE BOUNDARY ADJUSTMENT IS NECESSARY TO ENSURE THAT THE CORPORATE LIMITS OF THE DISTRICTS ARE CONSISTENT WITH THE CURRENT BOUNDARIES OF THE DISTRICTS.